

File Name	iLED-CmdGen.doc	Document Revision	1-0
Prepared By	Ivan Potter	Prepared For	iLED PTY LTD
Description	iLED Command Gen for Speakercraft to Command Fusion		



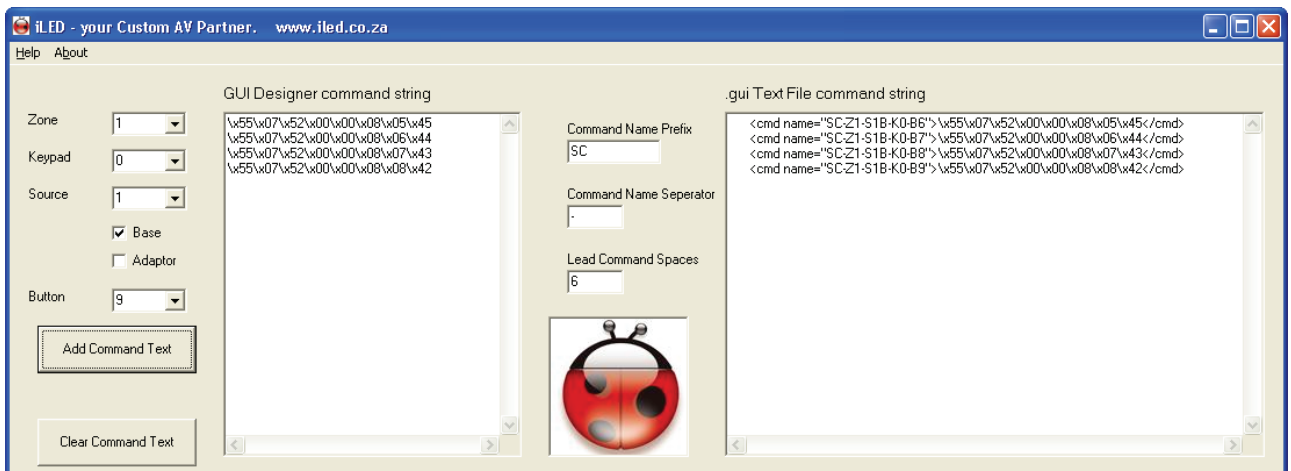
iLED (PTY) Ltd
Tel: +27 11 958 2529
Fax: +27 11 958 2591
Email: info@iled.co.za

41 Willow Brook Office Park
BLOCK C Van Hoof Street
Ruimsig

Roodepoort
P.O. Box 3221
Wilropark
1731

Contents

General Description	3
Software Installation	3
Instructions	3
User Interface	3
Speakercraft Command Information	3
Create a Command	4
Command format	4
GUI Designer Command String	4
GUI Designer Text File (XML)	5
Additional Information	6
Suggestions	6
iLED Introduction	6



The CommandGen has been developed to improve productivity when implementing a Speakercraft to CommandFusion project.

General Description

Speakercraft have a Hexidecimal based protocol to provide third party control of the MZC. The implementation of this protocol has been simplified by the iLED CommandGen. Each command can very easily be converted to a Command Fusion string by simply entering information from the speakercraft project printout. The correct hex string is generated for copying directly into a command fusion command editor or for more advanced users, the entire html code for all the required commands can be copied into the command fusion .gui file

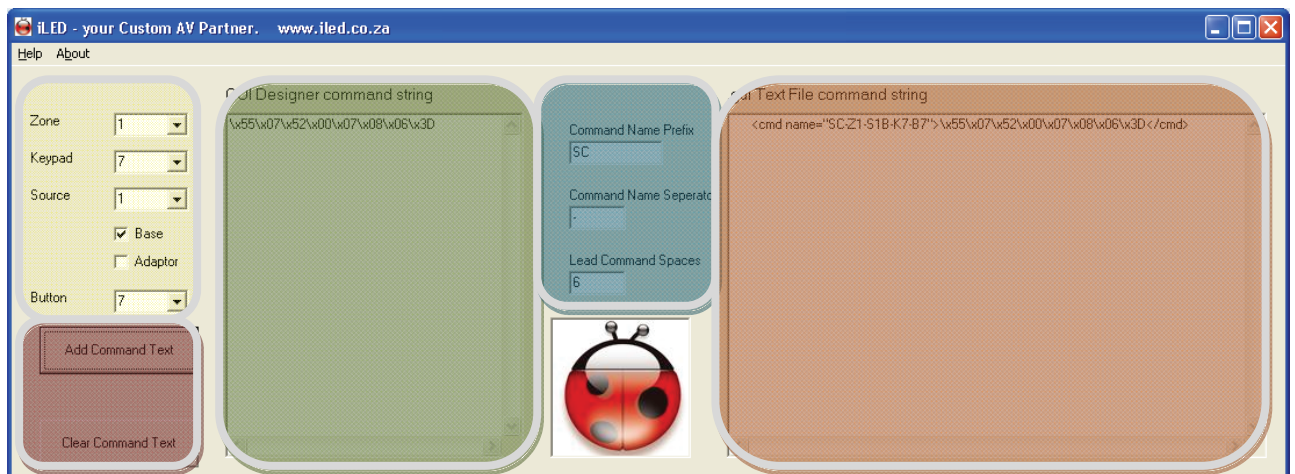
Software Installation

The Command Gen is available from iLED. Simply email ivanp@iled.co.za or visit our website at <http://www.iled.co.za/c61/INSIGHTS.aspx> for a link to send us a request.

The software is distributed as a single .exe file. Copy this into a folder of your choice and run the application.

Instructions

User Interface



Speakercraft Command Information

Open the Speakercraft MZC project print out and determine the button press you want a command generated for. Enter the

1. Zone from the drop down box or type in the Zone number. (1 to 32)
2. Keypad address from the drop down box or type in the Keypad Address (0 to 15).
3. Source from the drop down box or type in the Source number. (1 to 8)
4. Select if the Source is from the Base or Adaptor – Refer to MZC EZ Tools Source information if you are not sure
5. Button from the drop down box or type in the Button number (1 to 255).

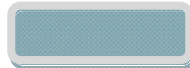
Create a Command



To clear both GUI Designer and Text File windows, click on the Clear Command Text Button

To generate a new command, click on Add Command Text button. This will add a command to both windows. If a command is currently in the window, the new command will be added to the bottom of the list

Command format

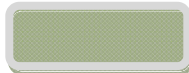


Two commands are generated each time a command is created. The Text File command can be configured to fit into your naming convention. When a command is generated and entered in GUI designer, you will be prompted in GUI designer to type in the name. When you are creating a text file for inclusion into the .GUI XML file, the command name needs to be created using a structured format for easy reference when inserting the command into a button in GUI designer. The default setting provides 6 leading spaces to conform to the current GUI file structure. A prefix can be added to suit your naming convention – the default is SC for speakercraft. A custom separator can be selected – the default is -.

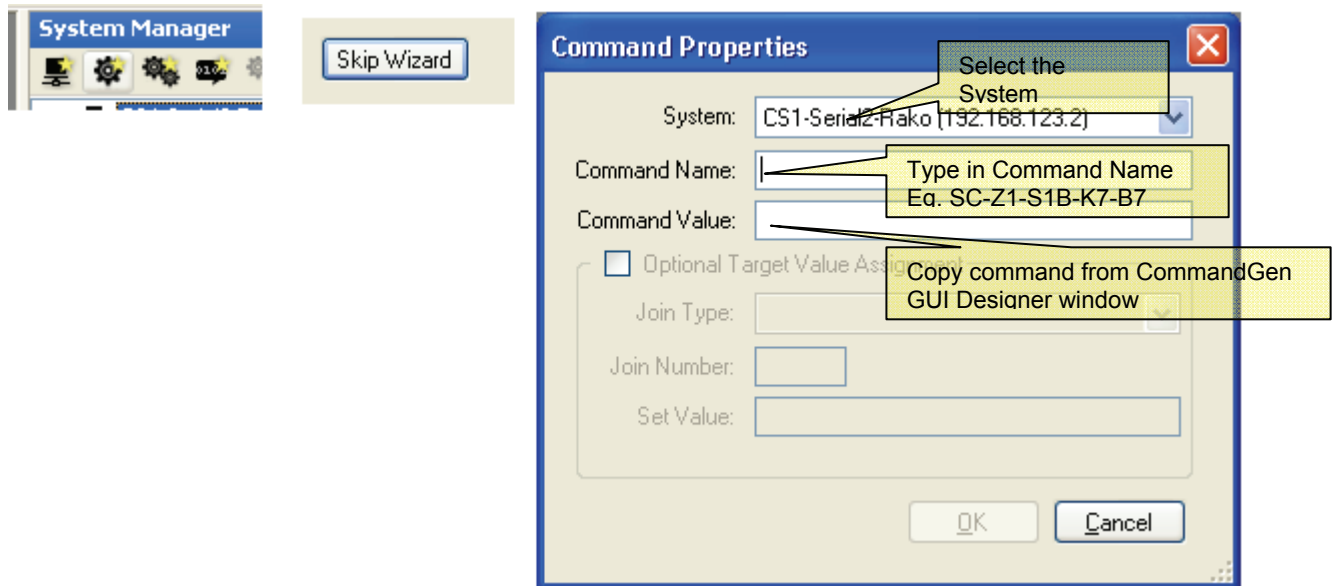
Using the defaults, when a command is generated the name provided is
 <prefix><separator><zone><separator><source><sourceextension><separator><button>

Note that sourceextension is A for Adaptor or B for Base. If source is not from base or adaptor this is not used.

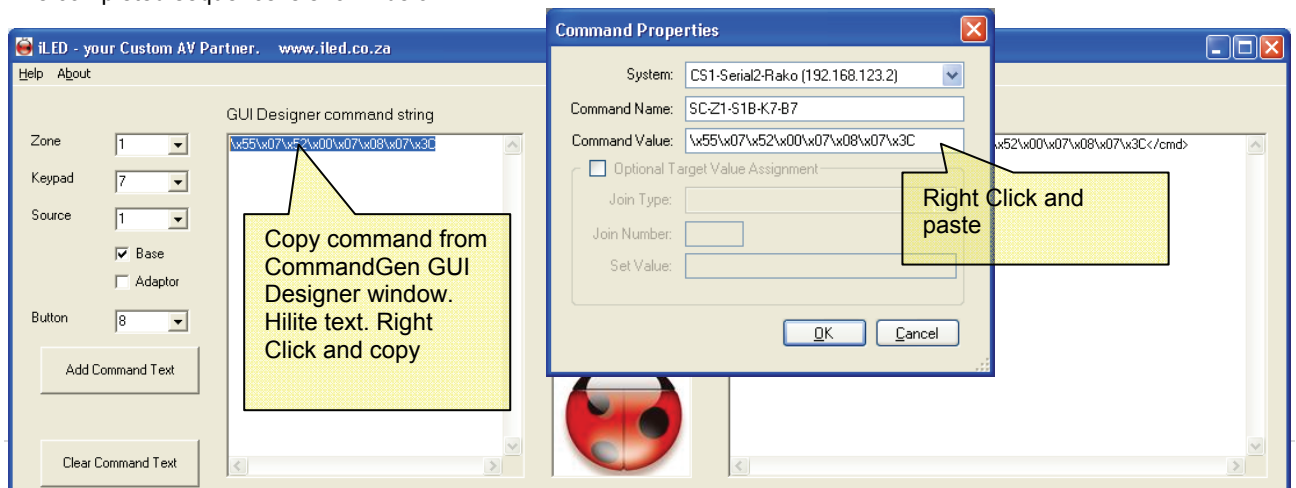
GUI Designer Command String



If you are creating single commands for GUI design commands, Open GUI designer and create the command – fill in the required button name and then generate the command in CommandGen. Copy the command and paste into GUI designer



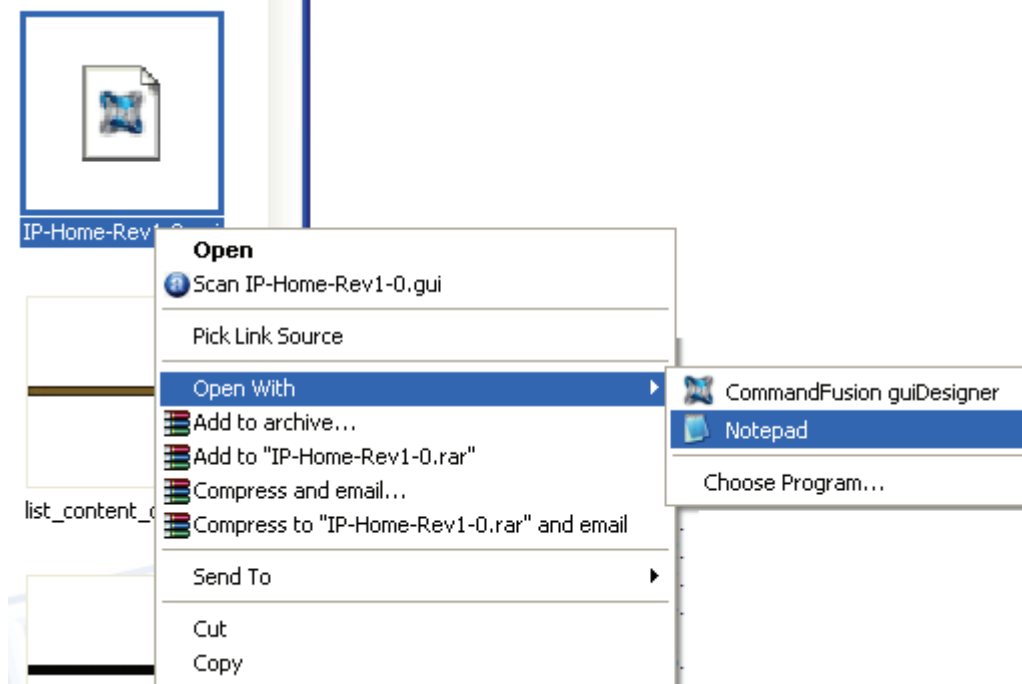
The completed sequence is shown below



GUI Designer Text File (XML)

To insert commands directly into the GUI designer XML file. This file has the same name as the project with an extension of .gui.

Find the file in the project folder and open using a text editor such as Windows Notepad.



Scroll down the GUI file to find the system that the command belongs to

```

IP-Home-Rev1-0.gui - Notepad
File Edit Format View Help
<cmd name="Rako-RM45-CH2-40">RO:45\x0dCH:2\x0dLE:90\x0d</cmd>
<cmd name="Rako-RM45-CH2-70">RO:45\x0dCH:2\x0dLE:150\x0d</cmd>
<cmd name="Rako-RM45-CH2-90">RO:45\x0dCH:2\x0dLE:200\x0d</cmd>
<cmd name="Rako-RM45-CH3-40">RO:45\x0dCH:3\x0dLE:90\x0d</cmd>
<cmd name="Rako-RM45-CH3-70">RO:45\x0dCH:3\x0dLE:150\x0d</cmd>
<cmd name="Rako-RM45-CH3-90">RO:45\x0dCH:3\x0dLE:200\x0d</cmd>
<cmd name="Rako-RM45-CH3-OFF">RO:45\x0dCH:3\x0dLE:0\x0d</cmd>
<cmd name="Rako-RM45-CH3-on">RO:45\x0dCH:3\x0dLE:255\x0d</cmd>
<cmd name="Rako-RM44-OFF">RO:44\x0dCH:0\x0dOFF\x0d</cmd>
</system>
<system name="Speakercraft" ip="192.168.123.2" port="4999" alwayson="1" heartbeatRx="" heartbeatTx="" heartbeatMode="0" eom="\x0d"
connectionStatus="5" disconnectionStatus="6" startupCmd="sc-s6-Meta-MenuInfo">
</system>
</systems>
<macros>
<macro name="CurtainsClose">
<command delay="100">Rako-RM45-CH7-Close</command>
<command delay="100">Rako-RM45-CH8-Close</command>
</macro>

```

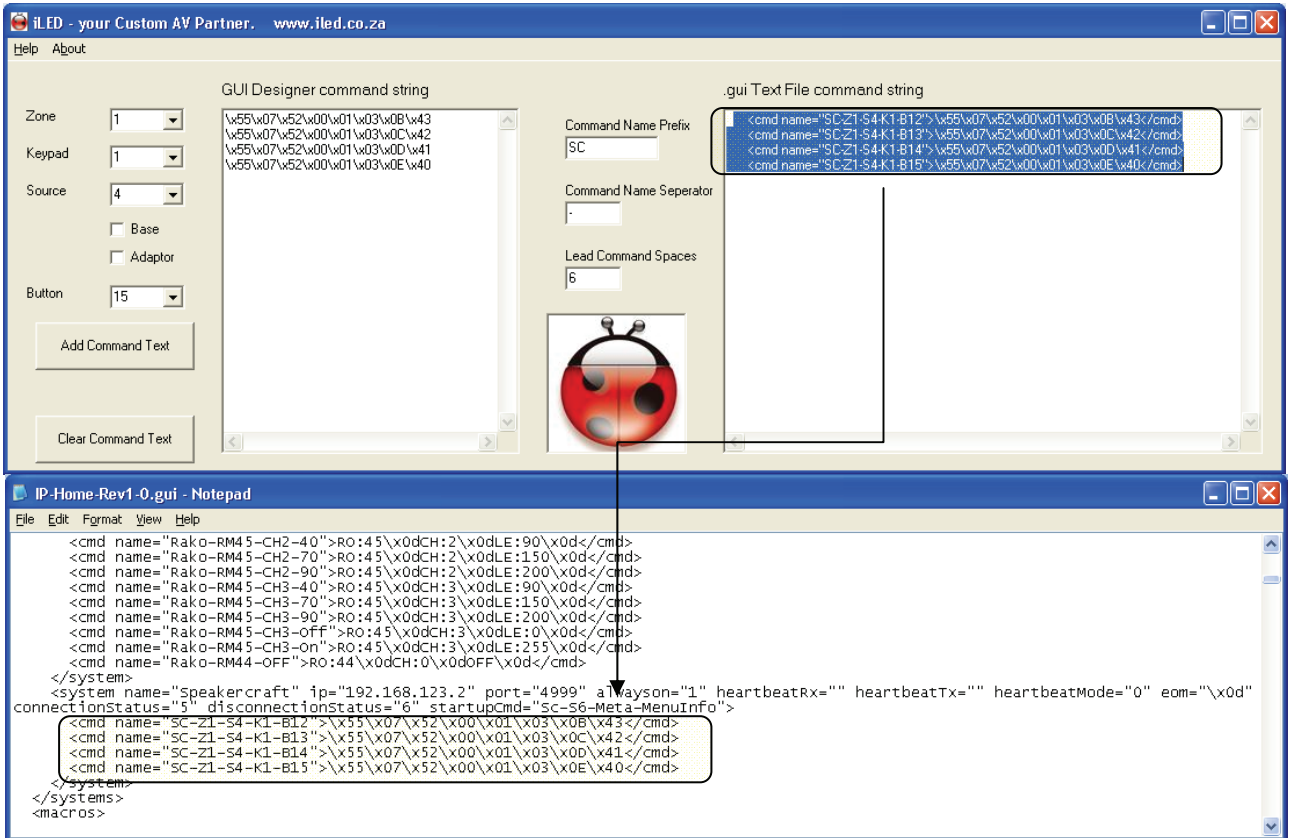
Insert the commands copied from the CommandGen Text file window – make sure that the insertion is before the closing </system> line by placing a line (Enter key at the line end)

```

IP-Home-Rev1-0.gui - Notepad
File Edit Format View Help
<cmd name="Rako-RM45-CH2-40">RO:45\x0dCH:2\x0dLE:90\x0d</cmd>
<cmd name="Rako-RM45-CH2-70">RO:45\x0dCH:2\x0dLE:150\x0d</cmd>
<cmd name="Rako-RM45-CH2-90">RO:45\x0dCH:2\x0dLE:200\x0d</cmd>
<cmd name="Rako-RM45-CH3-40">RO:45\x0dCH:3\x0dLE:90\x0d</cmd>
<cmd name="Rako-RM45-CH3-70">RO:45\x0dCH:3\x0dLE:150\x0d</cmd>
<cmd name="Rako-RM45-CH3-90">RO:45\x0dCH:3\x0dLE:200\x0d</cmd>
<cmd name="Rako-RM45-CH3-OFF">RO:45\x0dCH:3\x0dLE:0\x0d</cmd>
<cmd name="Rako-RM45-CH3-on">RO:45\x0dCH:3\x0dLE:255\x0d</cmd>
<cmd name="Rako-RM44-OFF">RO:44\x0dCH:0\x0dOFF\x0d</cmd>
</system>
<system name="Speakercraft" ip="192.168.123.2" port="4999" alwayson="1" heartbeatRx="" heartbeatTx="" heartbeatMode="0" eom="\x0d"
connectionStatus="5" disconnectionStatus="6" startupCmd="sc-s6-Meta-MenuInfo">
</system>
</systems>
<macros>
<macro name="CurtainsClose">
<command delay="100">Rako-RM45-CH7-Close</command>
<command delay="100">Rako-RM45-CH8-Close</command>
</macro>

```

And then inserting the text copied.



Additional Information

Check out project implementation examples at iLED's website <http://www.iled.co.za/c61/INSIGHTS.aspx>

Suggestions

Any comments and suggestions can be sent to ivanp@iled.co.za.

iLED Introduction

iLED PTY LTD is a South Africa's leading Commercial and Residential Audio Visual Custom Install distribution partner. We distribute the following products through a channel of trained CI dealers

- Speakercraft
- Global Cache
- Apart Audio
- Intelix
- Rako Controls
- Planet Waves
- eZi 19 inch racks / enclosures and termination solutions
-

Please visit www.iled.co.za to find out more